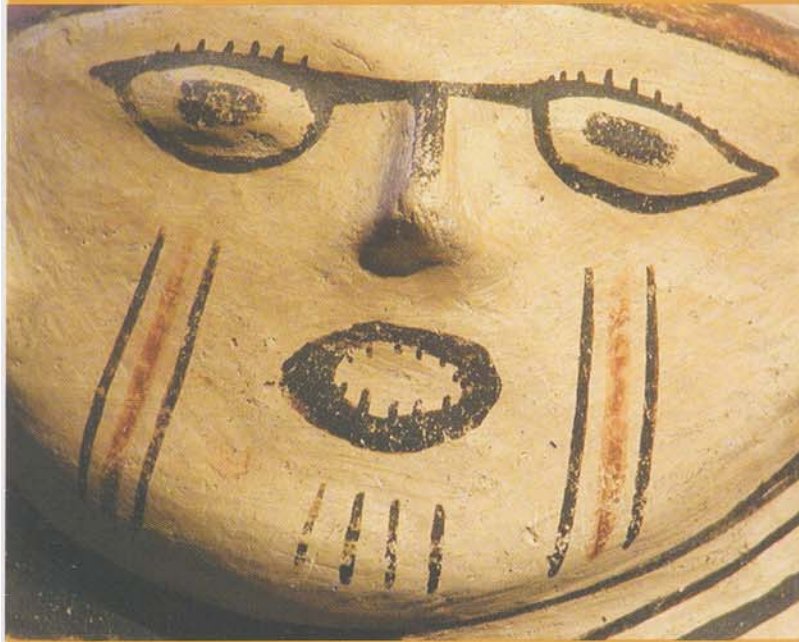




THE AMERIND FOUNDATION



THE AMERIND



# FOUNDATION



A Museum of Native American  
Archaeology, Art, History, and Culture



## THE AMERIND FOUNDATION

2100 North Amerind Road, P.O. Box 400, Dragoon, Arizona 85609

Phone: 520-586-3666 Website: [www.amerind.org](http://www.amerind.org) E-mail: [amerind@amerind.org](mailto:amerind@amerind.org)

### October-May

Open daily from 10:00 a.m. to 4:00 p.m.

### June - September

Wed - Sun 10:00 a.m. to 4:00 p.m.

**The Amerind is closed on major holidays**

### Fees

\$5.00 for adults; \$4.00 for seniors; \$3.00 for children (12-18; under 12 free)

Call the museum or check our website for group rates, special events, and

exhibition openings. Portions of the historic Amerind facility are not handicapped accessible.

Please call if you have questions about accessibility.

The Amerind is located just off Interstate 10 in Texas Canyon between Benson and Willcox. Take the Dragoon exit (318) and proceed east one mile to the Amerind Foundation turnoff. Turn left at the sign.

Please note new Amerind  
Foundation hours effective 6/1/05:  
Open year round, Tuesday - Sunday,  
10 a.m. - 4 p.m. Closed Mondays  
and major holidays.

I 10 WEST TO  
PHOENIX



TUCSON

BENSON

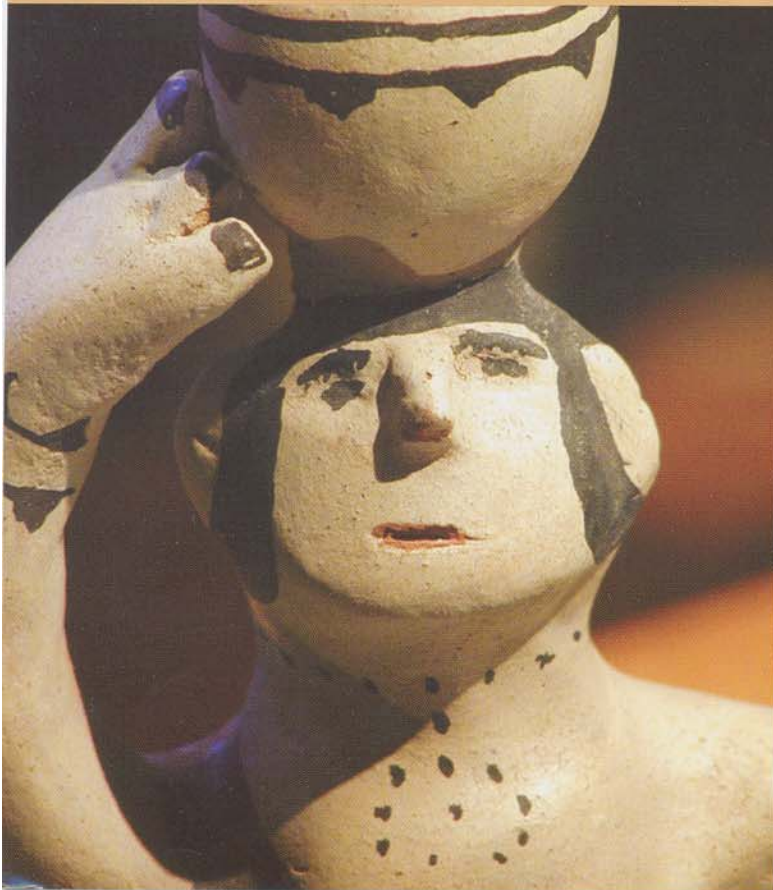
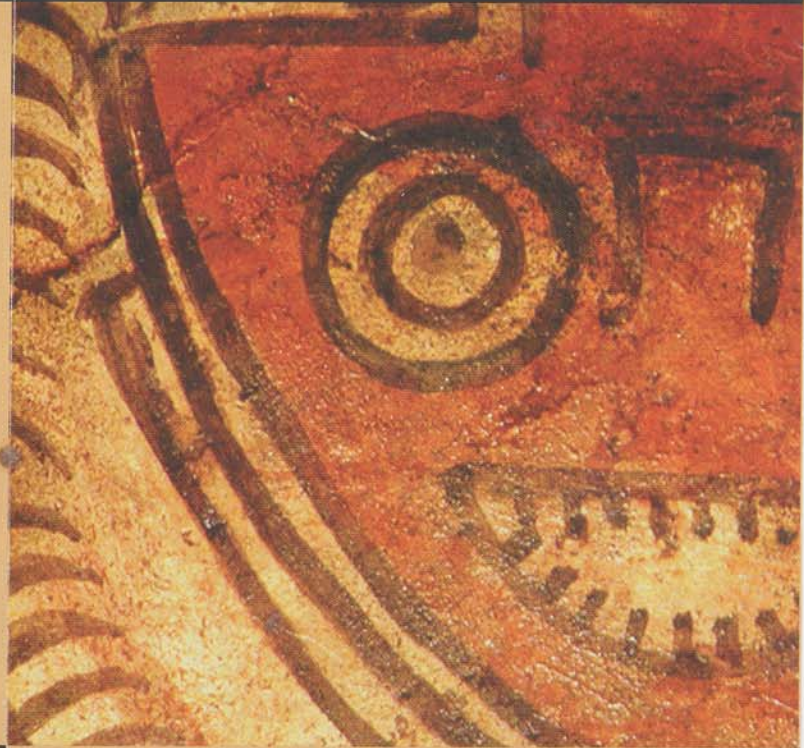
WILLCOX

I 10 EAST TO  
NEW MEXICO

# THE AMERIND FOUNDATION

## Amerind Museum

Founded in 1937 by William Shirley Fulton, the Amerind Foundation is a private, nonprofit 501(c)(3) anthropological and archaeological museum and research center dedicated to the preservation and interpretation of Native American cultures and their histories. Located in spectacular Texas Canyon in the Little Dragoon Mountains of southeastern Arizona, the Amerind houses one of the finest private collections of Native American art and artifacts in the country.



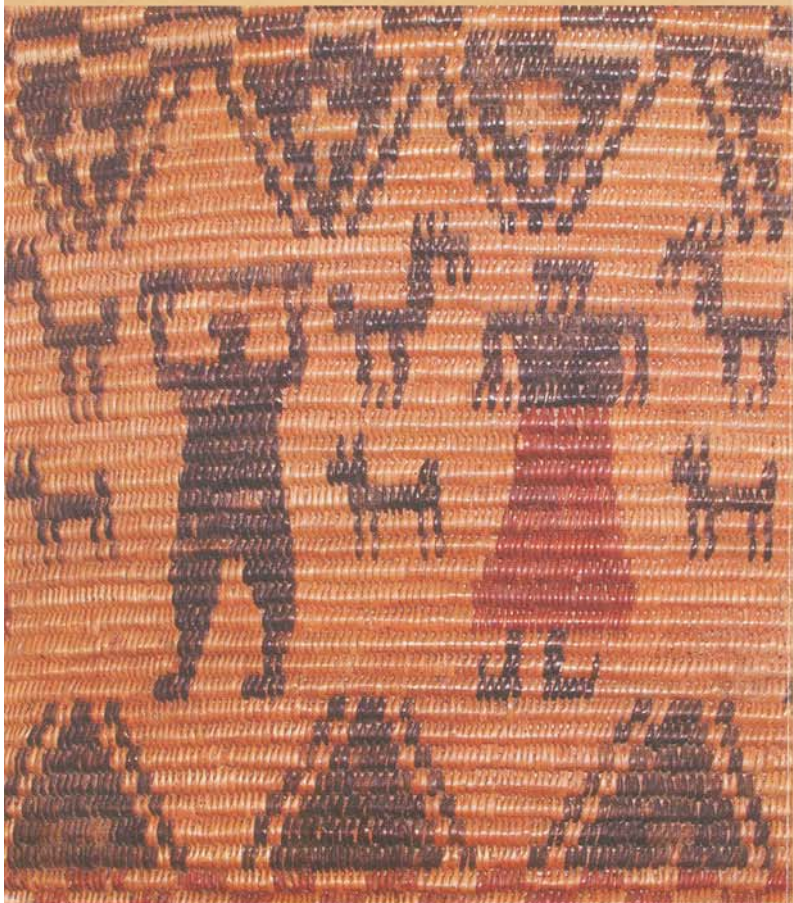
Amerind Museum exhibitions tell the story of America's first peoples from Alaska to South America and from the last Ice Age to the present. Amerind's Fulton-Hayden Memorial Art Gallery features works on western themes by such artists as Harrison Begay, Carl Oscar Borg, William Leigh, Frederic Remington, and Andy Tsihnahjinnie. The museum store offers southwestern arts, crafts, and books on prehistory, history, and Native American cultures. The museum and art gallery are housed in Spanish Colonial Revival style buildings designed by noted Tucson architect Merritt Starkweather.

The Amerind experience is more than art and artifacts. On Native Arts weekends, Amerind visitors

will find Indian artists demonstrating their skills in the museum's main gallery. The Amerind also has a comprehensive hands-on education program for children of all ages, and special events and openings are a periodic feature of the Amerind calendar. Many people come to Amerind to experience the native plants, birds, and solitude of the high desert. A secluded picnic area offers a quiet retreat amidst the massive granite boulders of Texas Canyon.

### Research

In addition to its museum and public programs, the Amerind Foundation's archaeological and ethnographic collections, research library, and



archives are important resources for scholars conducting research on southwestern anthropology, archaeology, history, and Native American studies. Amerind's resident scholar and advanced seminar programs address important research issues in anthropology, archaeology, and related disciplines. Seminar proceedings are regularly published in Amerind's New World Studies Series through the University of Arizona Press.

### Membership

Visit the Amerind website ([www.amerind.org](http://www.amerind.org)) or call us at 520-586-3666 to learn how you can become a member of one of Arizona's premier anthropological museums and research centers.